



Winter 24/25 Youth Basketball Parent Meeting

Meet the Athletics Team

[Kacy George](#)

Athletics Supervisor

972-624-3950

kgeorge@thecolonytx.gov

[Emery Owczar](#)

Athletics Specialist

972-624-3957

eowczar@thecolonytx.gov

[Michael Smith](#)

Recreation Specialist

972-625-1106

msmith@thecolonytx.gov

Where can I find Information?

- **Website - PlayTCsports.com**
 - Game Schedule
 - Rules
 - Season Information on the basketball specific page
- **Other Department Contact Information**
 - Athletics Team Email: playtcsports@thecolonytx.gov
 - Main Department Line: 972-625-1106
 - Answered: M-F 6:30am - 9 :00pm & Saturday 8:30am-6:00pm

Important Season Dates

- **Week of 10/28/2024** - Practices begin
- **10/31** - Halloween - No practices
- **11/5** - Voting Day - No Practices
- **11/16** - Games begin
- **11/25 - 11/30** - Special Holiday Practices
- **11/30** - No Games
- **12/23 - 1/3** - Special Holiday Practices
- **12/21** - No Games
- **12/28** - No Games
- **1/4** - Games TBD
- **1/20** - Martin Luther King Jr. Day - No Practices
- **2/1 or 2/8** - Last day of games



Age Verification

Birth Certificates or passports will be required this season for anyone to play!

- The deadline to receive age verification is by **11/4**. If we do not receive a birth certificate or passport the child will not be able to play until we receive it and verify the age.
- **What we will take?**
 - Birth Certificate
 - Passport
- **Parents have these options to submit:**
 - Email it to playtcsports@thecolonytx.gov
 - Stop by the recreation center for staff to make a copy.

If you have submitted for a previous season, you do not need to submit it again!

Age Qualification

What is the aging date for this season?

9/1/2024

How does the aging date work?

Whatever age your child was on 9/1/2024 is the division they qualify for.

- Example: My child was 10 on 9/1/2024, but he is now 11 years old. He technically qualifies for the 10U division. If you would want to play up in the 12U division you would have to get approval from the Athletics staff.

You can find an informational sheet with more information on exceptions on www.playtcsports.com!

In order to play up you must go through the approval process from the Athletics team.

Practice & Game Locations

Practice Locations

- Ethridge Elementary School
 - 6001 Ethridge Drive, The Colony, Texas 75056
- Camey Elementary School
 - 4949 Arbor Glen Road, The Colony, Texas 75056
- Griffin Middle School
 - 5105 North Colony Blvd, The Colony, Texas 75056

Game Location

- Strike Middle School
 - 8798 Scotty's Lake Lane, The Colony, Texas 75056
- Rosemeade Recreation Center (10U Girls Only)
 - 1330 E Rosemeade Parkway, Carrollton, Texas 75007
- Crosby Recreation Center (8U Girls Only)
 - 1610 E Crosby Rd, Carrollton, Texas 75006

**Maps located at
the end of the
presentation!**

Practice Information

- Each team receives 2 practice per week for the season
- Please remember we are guests at all of these locations so please make sure you are following any policies and picking up your trash after practice or games!



Game Information

- **When is the first weekend of games?**
 - November 16th
- **Where do we play?**
 - Strike Middle School
 - Rosmeade Recreation Center (10U Girls)
 - Crosby Recreation Center (8U Girls)
 - Recreation Center - (2/1 Only)
 - Griffin Middle School - (2/1 Only)
- **How many games for the season?**
 - Teams will be scheduled 8 games
 - 6U will be scheduled 6 games
- **Who makes the playoffs?**
 - The top 4 teams in each division will make the playoffs.
 - 6U does not have playoffs
- **Game Schedule**
 - The game schedule will be released by 11/8/2024

Please do not screenshot or print the schedule! Our goal is not to make any changes for the season, but there is a chance that changes might happen. The schedule online is the most up to date always!

Jerseys

- Each team will receive a new set of jerseys.
- We will **NOT** have extra jerseys at games so please make sure your child is wearing their jersey or has their jersey for the game. *If they do not have their jersey, they cannot play.*
- Please make sure your players are **ONLY** using the jersey provided for this season. This ensures your team will not have any duplicate numbers which causes issues with scorekeeping and managing the game!
- **Game Day:**
 - Home - Grey
 - Away - Blue

(12U Boys Only)

 - Home - Lime Green
 - Away - Black

Coaches

We rely on volunteer parent coaches for this league to run!

- **Coach Requirements**
 - **All coaches are required to do a background check in order to coach for the season!**
- **Anyone who would like to assist on the sideline at games or assist at practice must go through the background check process!**
- **The background check process can take 2-5 business days.**
- **Anyone that is not officially cleared will not be allowed on the sideline.**

Thank you to all of those who have volunteered their time to coach!

Spectator Guidelines

- All spectators must stay on the spectator sideline during the game. Only background approved coaches may be on the team bench.
- Spectators must sit on the bleachers on the opposite side of the team benches.
- Unsportsmanlike conduct from parents will not be tolerated. Depending on the severity of the conduct we will ask the individual to leave the complex. Play will not resume until they leave.
- **Ejection/Consequences**
 - If a parent is ejected from a game they will not be able to attend the next game. Once allowed back if they get ejected for a second time they will not be able to attend any games for the remainder of the season.
- **The aforementioned suspensions will be the minimum penalty enforced and may be increased in each situation due to the severity of actions.**

Rules - Division Breakdown

Division	Ball Size	Basket Height	Game Length	Free Throw	Lane Violation	Full Court Defense
6U Coed	27.5	8'6ft	4 Six Minute Quarters	No Free Throws	5 seconds	Not Allowed
8U Boys	28.5	8'6ft	4 Six Minute Quarters	13.5	5 seconds	Last minute of each half (Exception- 15 point spread)
8U Girls	28.5	8'6ft	4 Six Minute Quarters	13.5	5 seconds	Last minute of each half (Exception- 15 point spread)
10U Boys	28.5	10ft	4 Eight Minute Quarters	13.5	5 seconds	Last two minutes of each half (Exception- 15 point spread)
10U Girls	28.5	10ft	4 Eight Minute Quarters	13.5	5 seconds	Last two minutes of each half (Exception- 15 point spread)
12U Boys	29.5	10ft	4 Eight Minute Quarters	15	3 Seconds	Played anytime (Exception- 15 point spread)
12U Girls	28.5	10ft	4 Eight Minute Quarters	15	3 Seconds	Played anytime (Exception- 15 point spread)

Rules - Playing Requirements

- **Playing Requirements**

- The coach is responsible to designate 5 starters (4 for 6U) for each game and to note these starters on the scoresheet. These five starters **MUST** play the entire first quarter. No substitutions are allowed (Exception: a player may be taken out due to an injury but must return to the game as soon as they are able to)
- All remaining players are automatic starters for the second quarter, and **MUST** play the entire second quarter without substitution (See exception above).
- If there are fewer than five remaining players to start the second quarter, only those players who played the **ENTIRE** first quarter are eligible for substitution.

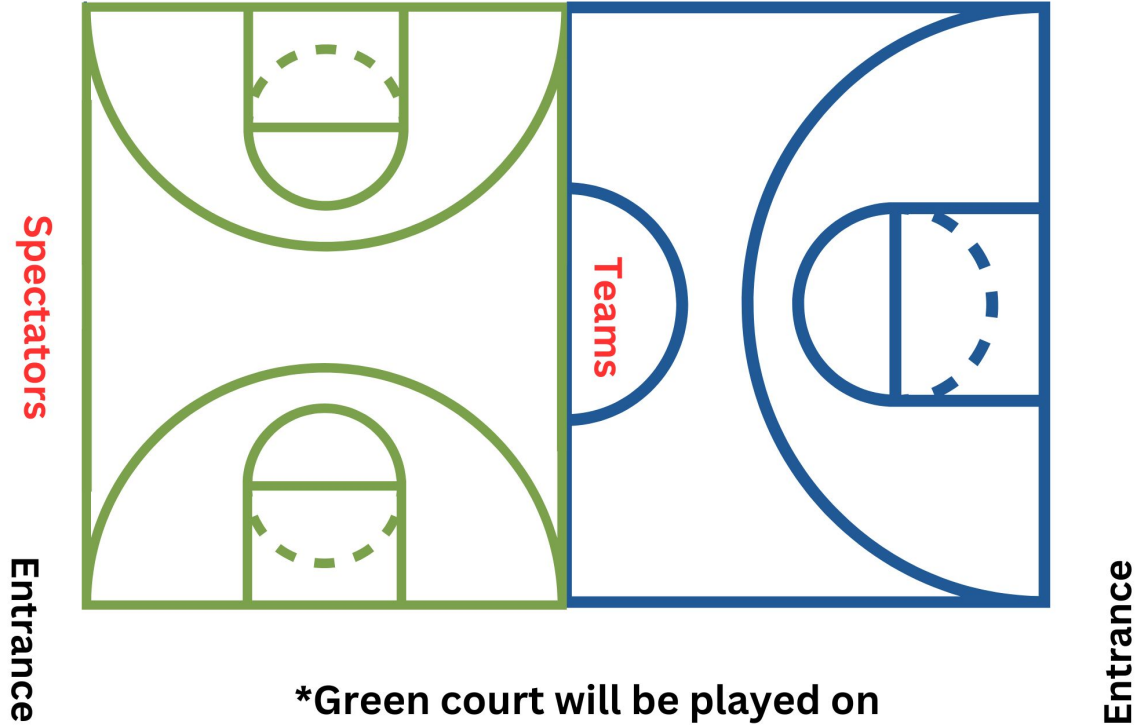
6U COED Format

- 4v4
- Games played on the side court
- Score is not taken :)
- We use wristbands in this division as a visual for the children to know who to guard. We provide the wristbands for games.

○

6U Court Layout

Bleachers



*Green court will be played on

Team Formation

Factors we use to determine teams:

- Coach Requests
- Friend Requests
- Age
- Seasons Played
- School
- Number of players registered

* Teams can only have a max of 10 on their roster

If a coach receives more than 10 requests, it will become the coach's final decision on who they want on their team.

Season Survey

We will be publishing a survey near the end of the season that we would appreciate everyone fill out! We value your feedback and are always looking for ways to improve the league!

Some areas in the league we have changed/added from past surveys:

- Changed formatting of the 6U division
- Added the pre-season parent meeting for better communication
- Starting the good sport initiative
- Starting the season newsletter for this upcoming season

***We will send out a link to the survey around the 2nd to last week of the regular season!**

Miscellaneous Information

- **Basketballs**
 - We do not provide basketballs for practices.
- **Awards**
 - The first place and second place team will get medals in each division.
- **Replacement Jersey**
 - If you need a replacement jersey, it would cost \$10.
 - ***Replacement jerseys would need to be requested & paid for no earlier than 2 business days prior to the next scheduled game***



Practice Location:
Ethridge Elementary School
6100 Ethridge Drive, The Colony, TX 75056



Practice Location:

Camey Elementary School

4949 Arbor Glen Road, The Colony, TX 75056



Practice Location:

Griffin Middle School

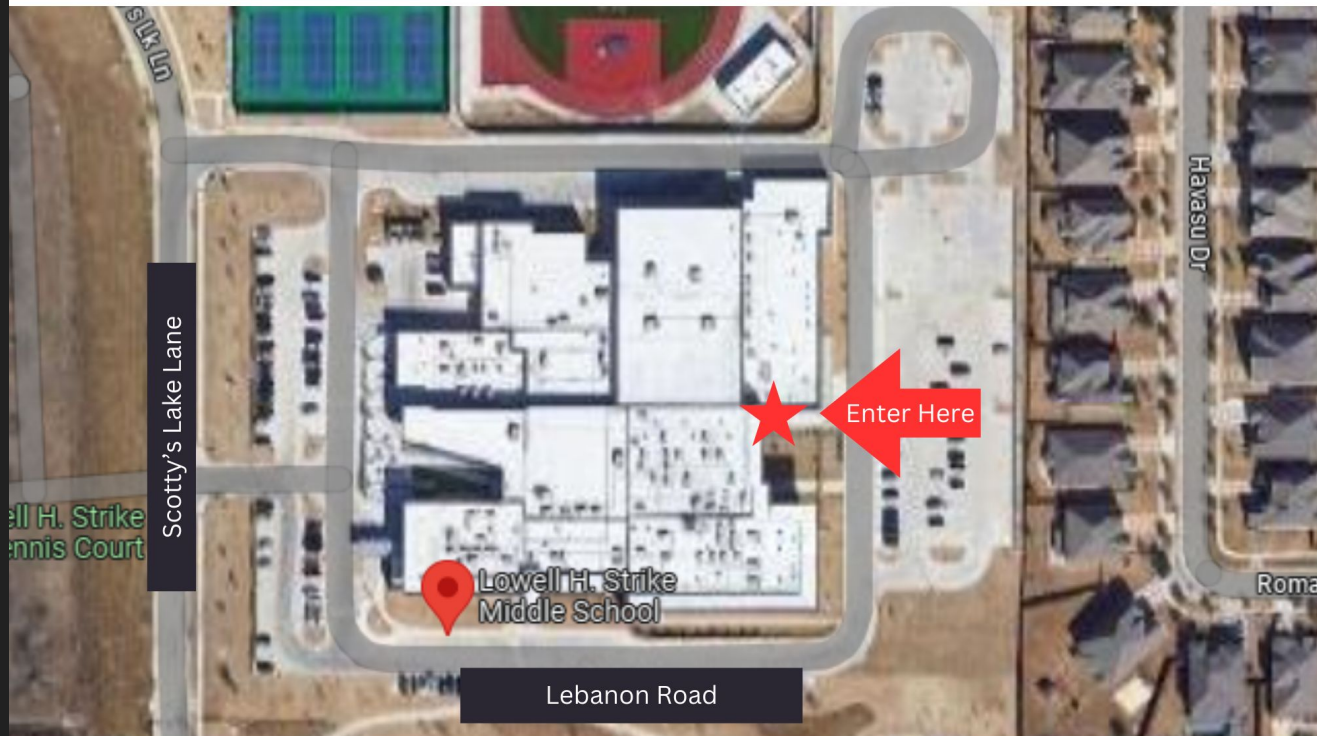
5105 N Colony Blvd, The Colony, TX 75056



Game Location:

Strike Middle School

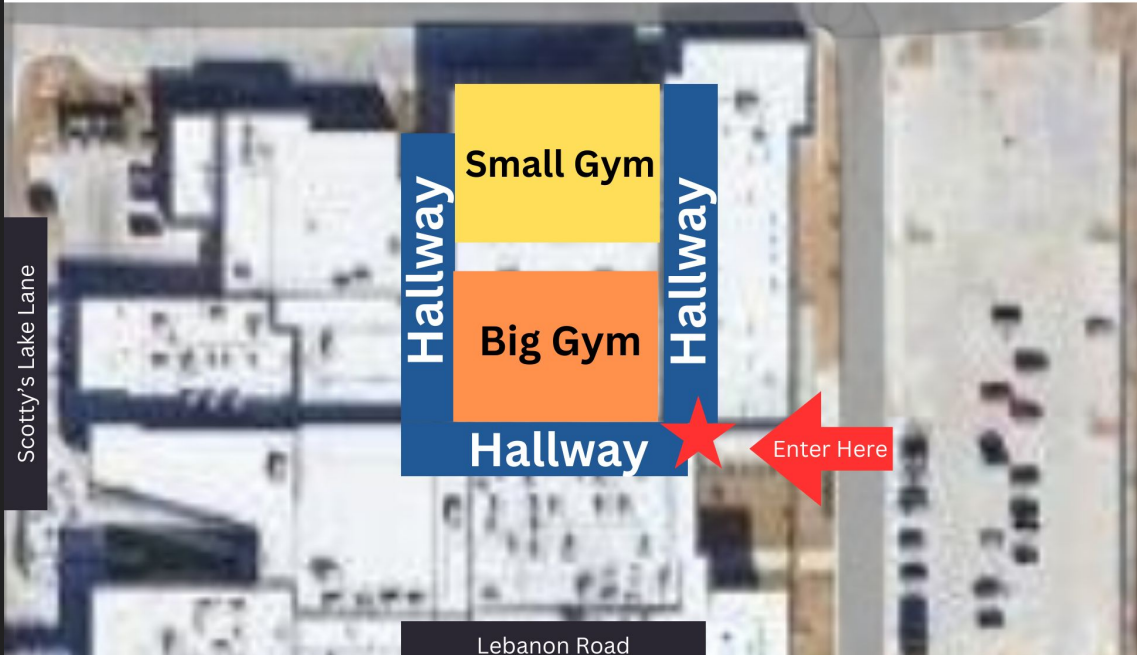
8798 Scotty's Lake Lane, The Colony, TX 75056



Gym Game Map

Strike Middle School

8798 Scotty's Lake Lane, The Colony, TX 75056



Any Questions?

Have questions contact us at playtcsports@thecolonytx.gov